

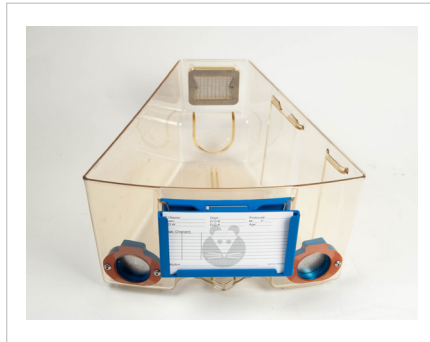
# Optimice - Blockparty

## Optimice Blockparty Cage Bases

Cage bases include filters, cage card adapter, and applicable auto-watering provisions. Cage tops, bottles, and feeders (all interchangeable with standard Optimice caging) are not included. Blockparty connecting tubes also must be ordered separately.

### Basic (Bottle or Bag Watering)

Product (pictured, right):  
C79110(M/P/S)BPdff



### Auto-Water, Cage-Mounted Valve Ready

Cage bases do not include watering valves.

Product: C79111(M/P/S)BPdff

### Auto-Water, Rack-Mounted Valve Ready

Product: C79112(M/P/S)BPdff



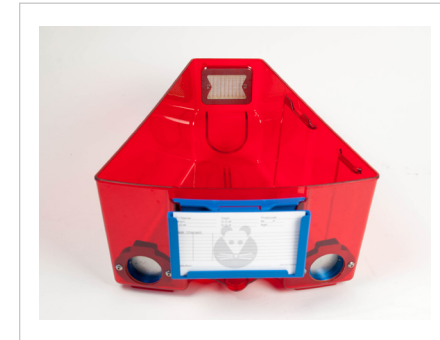
### Basic Red Polycarbonate

Product (pictured, right):  
C79110MREDBPdff

### Auto-Water, Cage-Mounted Valve Ready

Cage bases do not include watering valves.

Product: C79111MREDBPdff



\* For those intending to use Sipper Sac water bags, add valve adapter C45434 to this option

**NOTE:** M/P/S refers to plastic type/color: M-Polycarbonate, P-Amber Polysulfone, S-Smoke Polysulfone

[Back to Table of Contents](#)

# Optimice - Blockparty

## Blockparty Connecting Tube Assemblies

Connecting tubes simply press into ports on cages. A detent locks the connection, and a mildly firm pull releases the connection. Available in amber or red color. Constructed from Radel R and fully autoclavable.

Amber: C79BP050

Red: C79BP050RED



## Individual Blockparty Tube Components

### Bare Tube Half

Plastic tube half only; two required per tube assembly.

Amber: C43BP050

Red: C43BP050RED



### End Connector

Blue anodized aluminum. Sold individually (two required per tube assembly).

Product: C40BP050



### O-Ring

Provides the necessary air-tight seal when tube is installed.

Product: C32BP010

