

Optimice SOP - Cage Inhalation Nozzle and Cap

Introduction

The Optimice inhalation nozzle and cap can be used to administer or scavenge gases.



Figure 1: Rear nozzle



Figure 2: Rear cap



Figure 3: Front nozzle

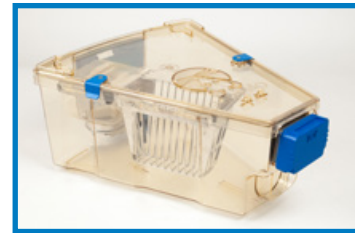
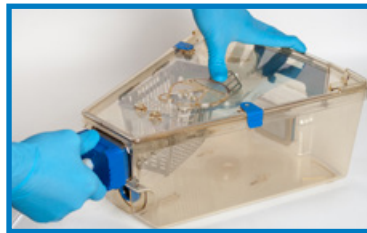


Figure 4: Front cap

Inserting Nozzle-Cap Combination

Animal Care Systems recommends taking samples from the rear inlet during scavenging because that is the air direction during normal operation. Do not scavenge or administer gases to cages docked on the rack.

1. Connect the tubing onto the barbed fitting of the nozzle.
2. Brace the cage, and insert the a filter nozzle onto either the front or rear filter inlet (depending on product). Ensure the fit is tight and that there are no obvious gaps.
3. Place the inhalation cap on the other filter inlet, also ensuring a tight fit.



For Inhalation Cage Top

1. Cap both filters of the cage. Ensure they are secure and there are no gaps.
2. Remove plug from cage top.
3. Insert tubing onto cage top.



Figure 5: Inhalation Cage Top with Two Caps

Removal

1. Brace the cage with one hand.
2. Rock the nozzle from side to side while pulling away from the cage.