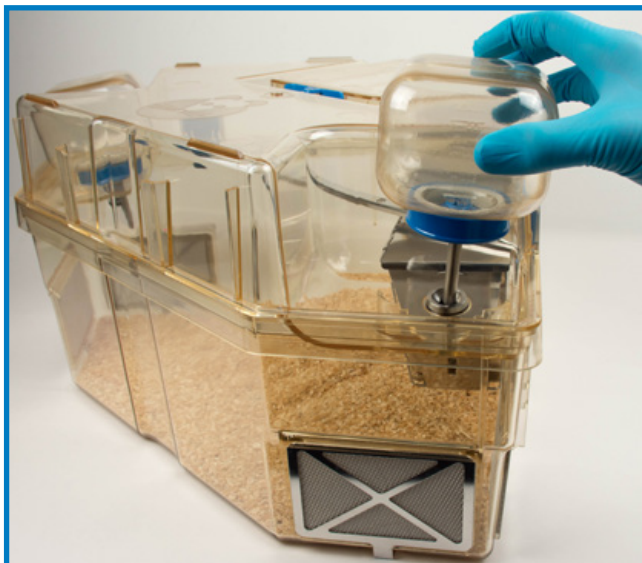


## Optirat Plus SOP - Using Standard Cage Components

The feeder has a hanger that interacts with the back-right hook within the cage. Make sure the cage's hook goes into the feeder's hanger. Swing shut the feed lid.



Insert the water bottle tube into each bay on either side of the cage top.



**Ensure the feeder and water bottle hooks fully interact with the cage features.**