



KEY ADVANTAGES

MAXIMIZE FLOOR SPACE WITH
HIGHEST DENSITY CAGING
SOLUTION ON THE MARKET

NO MOTORS OR ELECTRICITY
REQUIRED

NO MECHANICAL NOISE, HEAT,
OR VIBRATION

SPECIAL ANTIVIBRATION AND
LOW-NOISE CASTERS FOR
SMOOTH TRANSPORT

SINGLE EXHAUST HOSE
CONNECTION

WITHSTANDS AUTOCLAVE AND
DRY-HEAT TEMPERATURES

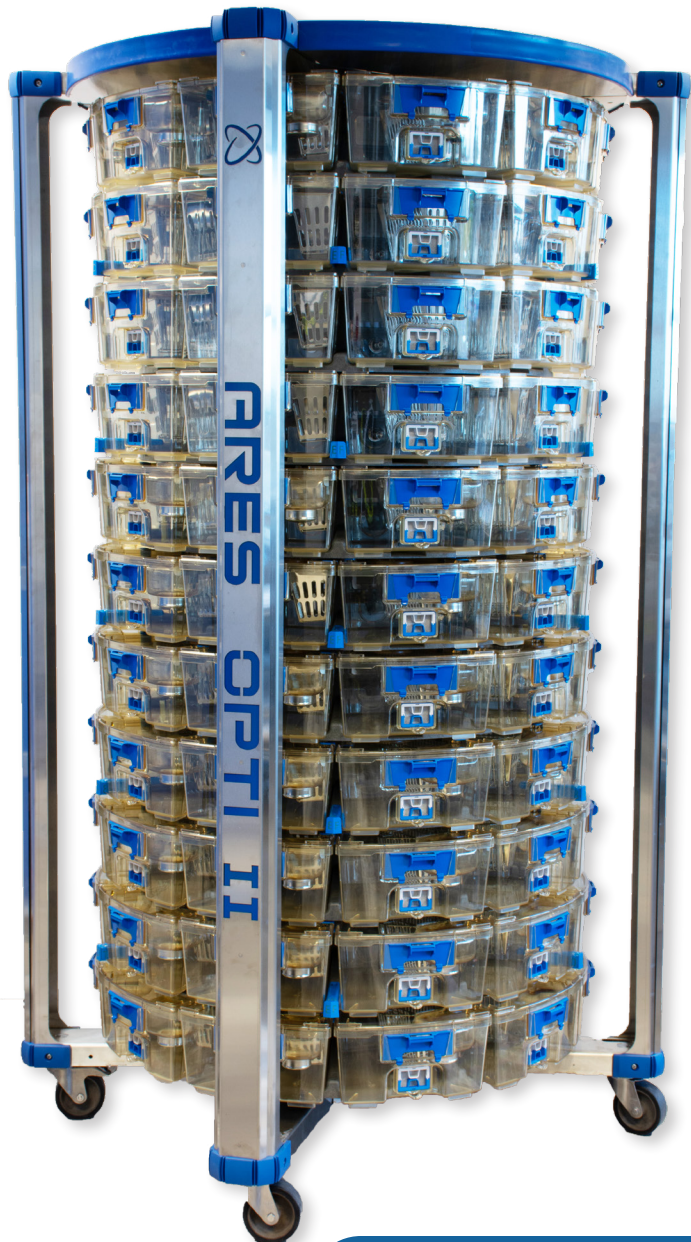
AUTOMATE YOUR WATERING
SUPPLY WITH PEACE OF MIND



SCAN TO
LEARN MORE

6538 Collins Ave. STE 325
MIAMI BEACH, FLORIDA 33141

aresscientific.com | (720) 283-0177 x2



OptiMice II

OptiMice II is a state-of-the-art IVC that provides the greatest animal density on the market: 110 cages in 1 square meter. It is backward compatible with existing OptiMice cages and still houses rodents in the best possible environmental conditions. OptiMice II relies on convection-assisted, low-velocity, one-pass airflow through each cage provides animals with the gentle ventilation necessary to ensure maximum comfort in an ideal, low-stress living and breeding environment — the same groundbreaking airflow technology as the original OptiMice. And because OptiMice II also doesn't rely on motors or blowers, the holding rooms are free of noises, vibrations, and odors.

Product Summary

CAPACITY	110 cages
CAGE FLOOR SPACE	75 in ² (485 cm ²)
CAGE HEIGHT	5 in (13 cm)
WATER CAPACITY	13 oz (400 mL)
FEEDER CAPACITY	17 oz (510 mL)
RACK CASTERS	4 swivel, 2 locking

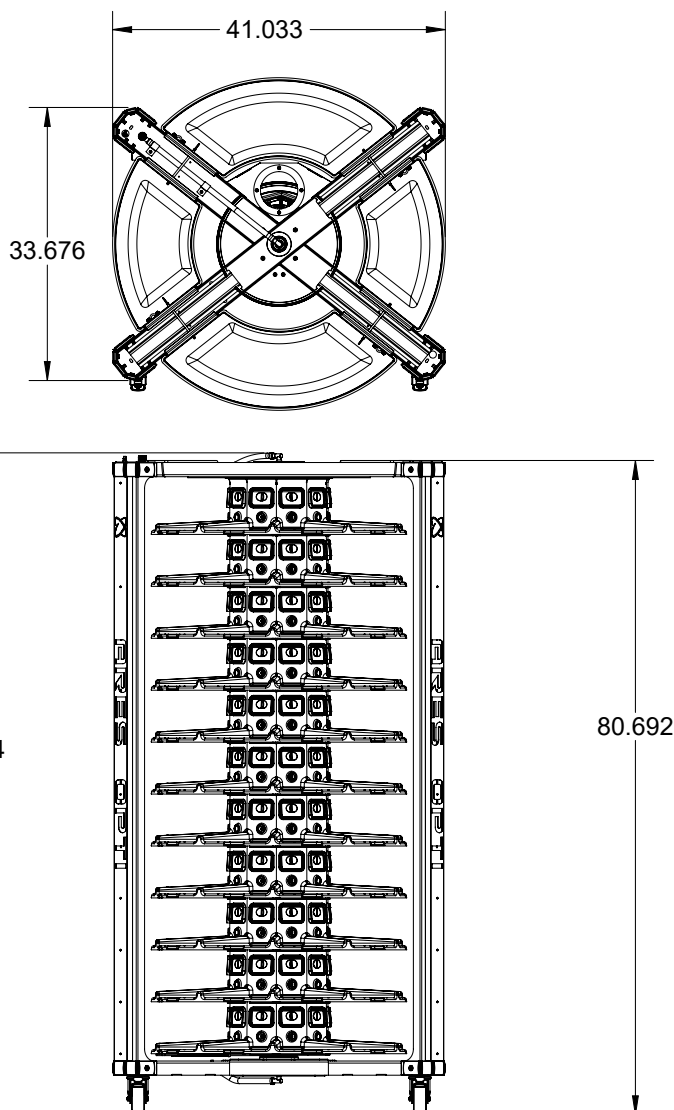
OptiMice II

RACK SPECIFICATIONS

- ▶ Includes complete stainless steel rack assembly with reinforced polymer carousel, cages, casters, and one 4-inch vent hose
- ▶ Capable of holding up to 110 mouse cage assemblies with filters, feeders, cage card holders, cage cards, and water bottles; cages and components available in polysulfone in amber or clear colors
- ▶ A single 4-inch diameter vent hose mounts at the top of the rack with a magnetic quick-disconnect
- ▶ Rack assembly is mounted on stainless steel swivel casters with 4-inch diameter antivibration high-temperature ball bearing wheels; two casters come with locks
- ▶ Airflow requirements, per rack: 60 CFM per minute recommended, 40 CFM (1,275 liters per minute) minimum; exhaust static pressure: 0.10 - 0.15 inches of water
- ▶ High-flow Reemay flat filter assemblies with integral face plates ensure uniform cage ventilation

AUTO-WATERING SPECIFICATIONS

- ▶ Auto-water racks include 11 manifolds (one per platter) that are plumbed to the water supply via an individual water valve for each cage station
- ▶ The auto-water manifolds are made of 316 stainless steel, and the tube diameter is 0.5 inches
- ▶ The Avidity and SE Lab Group valves connect with the manifold and supply water to each cage; the valves are made of 316 stainless steel
- ▶ Auto-water racks can be disinfected and sterilized without removing fixed components; the removable valve option features a valve that removes without special tools and can be steam sterilized



OPTIMICE II		RACK WITH CAGES	EMPTY RACK
Dimensions in (mm)	WIDTH	41.03 (1029)	41.03 (1001)
	DEPTH	41.03 (1029)	33.68 (856)
	HEIGHT	80.70 (2050)	
	HEIGHT (auto-water)	81.63 (2073)	
Weight lbs (kg)	WATER BOTTLE RACK	675 (307)	373 (170)
	AUTO-WATER RACK	700 (318)	381 (173)